

LED STRIP LIGHT 2835 - 300 LED - 12W/m - 21-23 lm/led



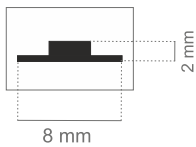
FEATURES:

- * New SMD LED 2835 with high brightness of 21-23 lm / LED
- * Thermal pads (also called thermally conductive pad) on the underside of LEDs aid the conduction of heat away from the component providing longer life and high lumen output
- * Reinforced, double sided FPC
- * Life time over 100 000 hours
- * Fast and easy installation with 3M adhesive tape
- * No UV emission
- * Wide viewing angle (120)
- * Low energy consumption 12W/m - 115 lm/W
- * High flexibility
- * Cutting section: 50 mm / 3 LEDs
- * Made in the EU

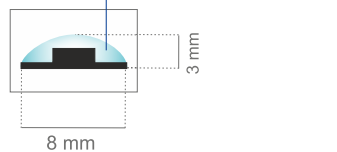


Technical specifications:

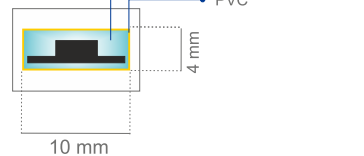
IP44



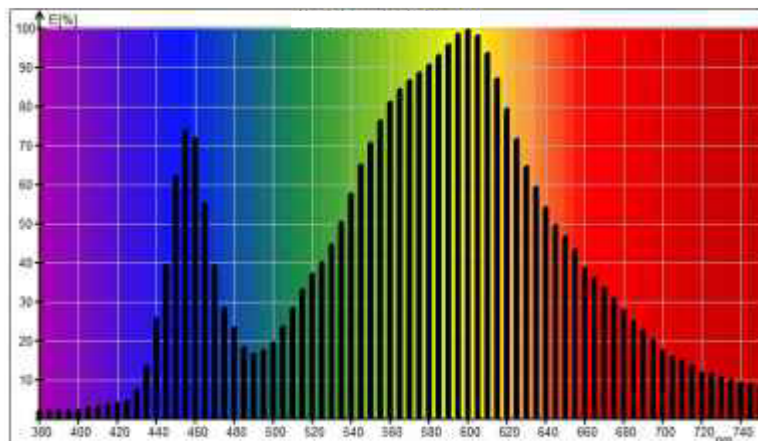
IP65



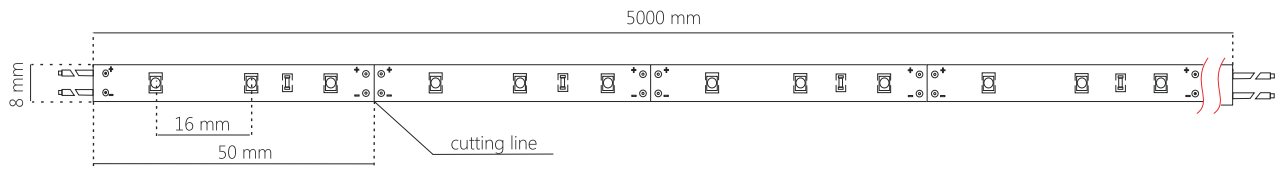
IP68



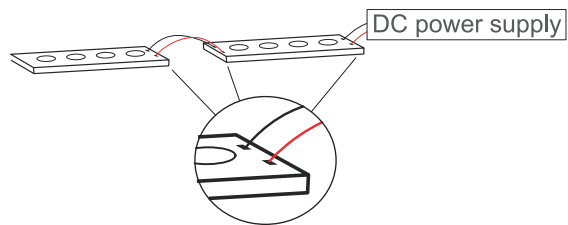
TS 2835 - 300 colour	Colour (K)	LED Qty. / 5 m	LED Qty. / 1 m	IP Rating	Voltage	Cutting Unit	Power	lm. max
● warm white	2700 K	300 pcs.	60 pcs.	IP44, IP65, IP68	12V DC	3 LED (50 mm)	12W/m	6300
○ daylight white	4000 K	300 pcs.	60 pcs.	IP44, IP65, IP68	12V DC	3 LED (50 mm)	12W/m	6600
○ cold white	6100 K	300 pcs.	60 pcs.	IP44, IP65, IP68	12V DC	3 LED (50 mm)	12W/m	6900



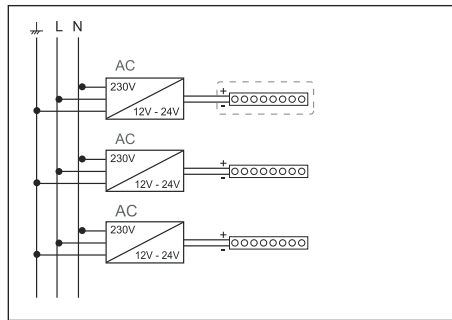
Schematics:



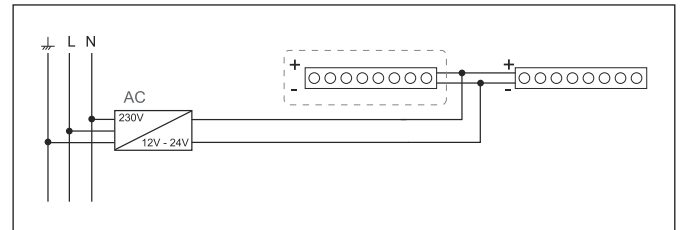
Connection of LED strip to power supply:



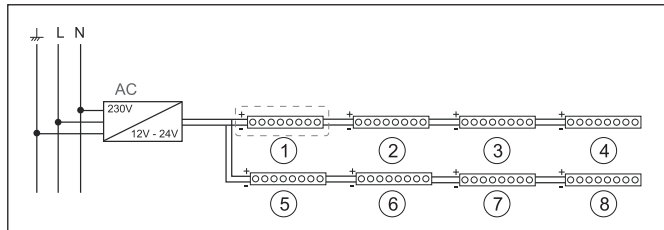
Connecting the LED strip to a number of power supplies:



Connecting a long section of the LED strip to the power supply:



Connecting the LED strip to a power supply:



Connecting a long section of the LED strip to the power supply:

