

# LED STRIP LIGHT SMD 3528 - 600 LED

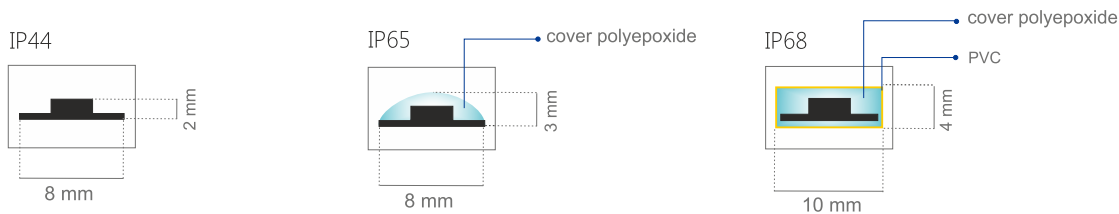


## FEATURES:

- Super bright SMD 3528 LEDs
- Painted FPC underlay
- Long lifetime of over 100,000 hrs
- Fast and easy installation with 3M adhesive tape
- No UV emission
- Wide viewing angle
- Low energy consumption
- High flexibility
- Can be cut every 25mm
- Made in the EU

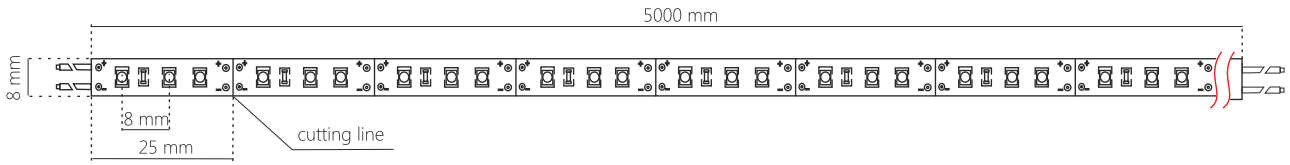


## Technical specifications:

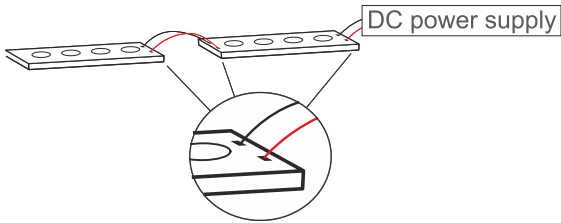


TS 3528 - 600 colour	Colour (K)	LED Qty / 5m	LED Qty / 1m	IP Rating	Voltage	Cutting unit	Power	lm. max
● warm white	2700 - 3500 K	600 pcs	120 pcs	IP44, IP65, IP68	12V DC	3 LED (25 mm)	9,6W/m	3768
○ daylight white	3800 - 4500 K	600 pcs	120 pcs	IP44, IP65, IP68	12V DC	3 LED (25 mm)	9,6W/m	3768
○ cold white	6000 - 7500 K	600 pcs	120 pcs	IP44, IP65, IP68	12V DC	3 LED (25 mm)	9,6W/m	3768
● red	620 - 630 nm	600 pcs	120 pcs	IP44, IP65, IP68	12V DC	3 LED (25 mm)	9,6W/m	688
● yellow	588 - 593 nm	600 pcs	120 pcs	IP44, IP65, IP68	12V DC	3 LED (25 mm)	9,6W/m	688
● blue	460 - 470 nm	600 pcs	120 pcs	IP44, IP65, IP68	12V DC	3 LED (25 mm)	9,6W/m	752
● green	510 - 530 nm	600 pcs	120 pcs	IP44, IP65, IP68	12V DC	3 LED (25 mm)	9,6W/m	1568

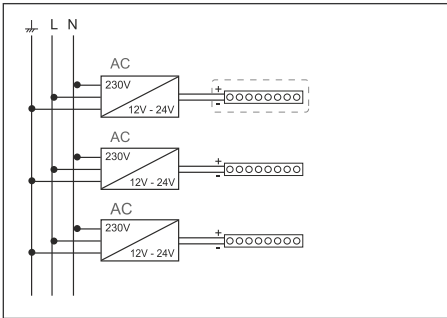
Schematics:



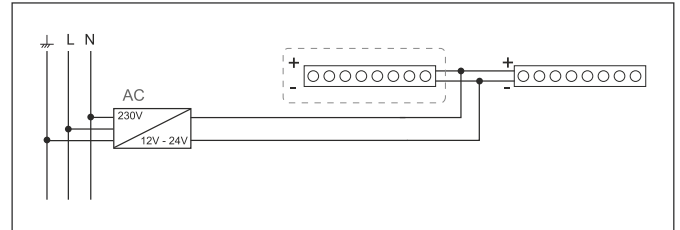
Connection of LED strip to power supply:



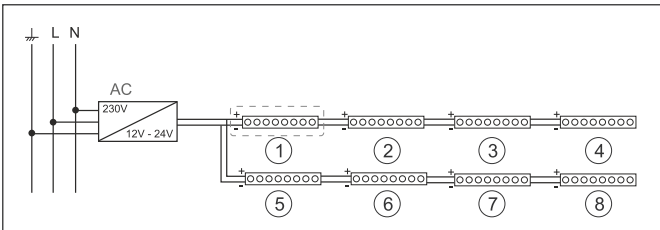
Connecting the LED strip to a number of power supplies:



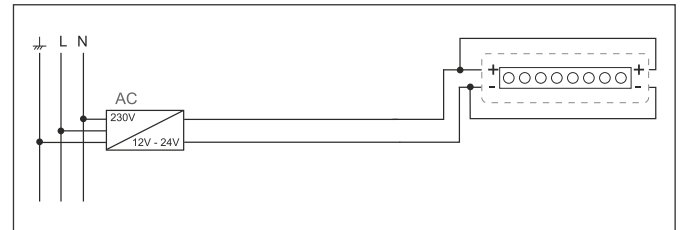
Connecting a long section of the LED strip to the power supply:



Connecting the LED strip to a power supply:



Connecting a long section of the LED strip to the power supply:




Proposed power supply:

**IP20**



- MEAN WELL [RS-50](#)
- MEAN WELL [RS-75](#)
- MEAN WELL [RS-150](#)

**IP67**



- MEAN WELL [LPH-18](#)
- MEAN WELL [LPV-35](#)
- MEAN WELL [LPV-60](#)
- MEAN WELL [LPV-100](#)

