

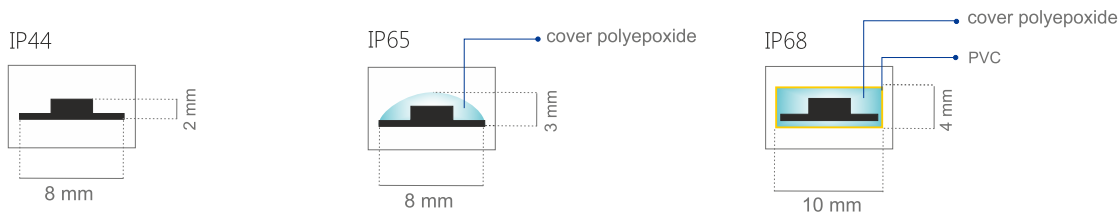
LED STRIP LIGHT SMD 5050 - 150 LED



FEATURES:

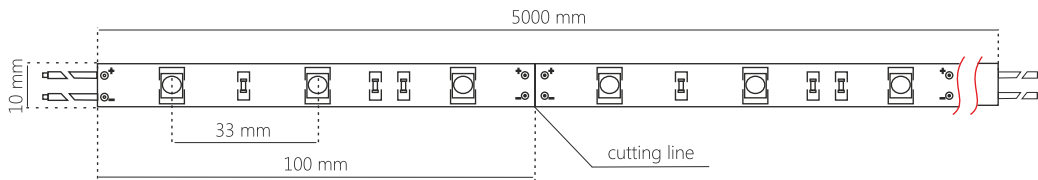
- Super bright SMD 5050 LEDs
- Painted FPC underlay
- Long lifetime of over 100,000 hrs
- Fast and easy installation with 3M adhesive tape
- No UV emission
- Wide viewing angle
- Low energy consumption
- High flexibility
- Can be cut every 100mm
- Made in the EU

Technical specifications:

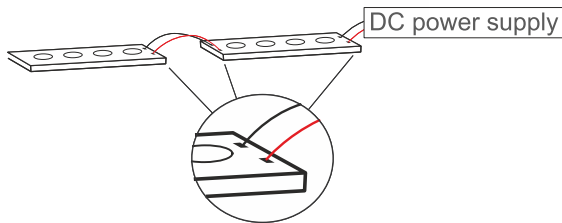


| TS 5050 - 150 colour | Colour (K) | LED Qty. / 5 m | LED Qty. / 1 m | IP Rating | Voltage | Cutting Unit | Power | lm. max |
|----------------------|---------------|----------------|----------------|------------------|---------|----------------|--------|---------|
| ● warm white | 2700 - 3500 K | 150 pcs | 30 pcs | IP44, IP65, IP68 | 12V DC | 3 LED (100 mm) | 7,2W/m | 2827 |
| ○ daylight white | 3800 - 4500 K | 150 pcs | 30 pcs | IP44, IP65, IP68 | 12V DC | 3 LED (100 mm) | 7,2W/m | 2827 |
| ○ cold white | 6000 - 7500 K | 150 pcs | 30 pcs | IP44, IP65, IP68 | 12V DC | 3 LED (100 mm) | 7,2W/m | 2827 |
| ● red | 620 - 630 nm | 150 pcs | 30 pcs | IP44, IP65, IP68 | 12V DC | 3 LED (100 mm) | 7,2W/m | 517 |
| ● yellow | 588 - 593 nm | 150 pcs | 30 pcs | IP44, IP65, IP68 | 12V DC | 3 LED (100 mm) | 7,2W/m | 517 |
| ● blue | 460 - 470 nm | 150 pcs | 30 pcs | IP44, IP65, IP68 | 12V DC | 3 LED (100 mm) | 7,2W/m | 562 |
| ● green | 510 - 530 nm | 150 pcs | 30 pcs | IP44, IP65, IP68 | 12V DC | 3 LED (100 mm) | 7,2W/m | 1177 |

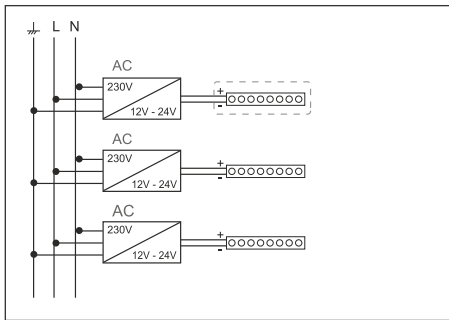
Schematics:



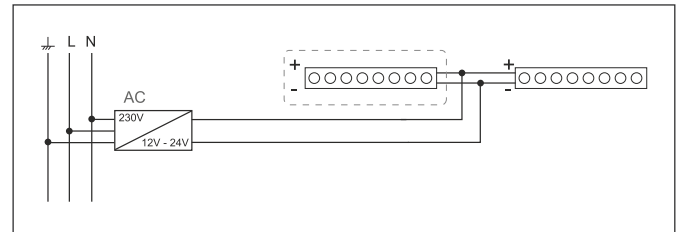
Connection of LED strip to power supply:



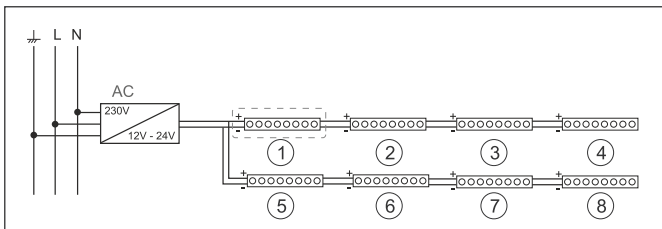
Connecting the LED strip to a number of power supplies:



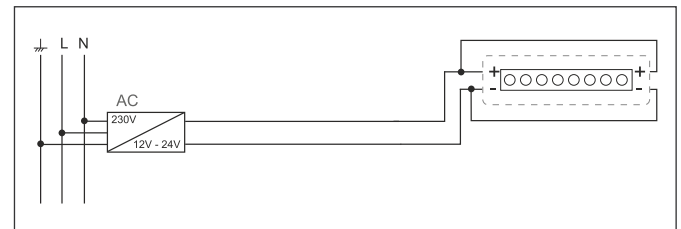
Connecting a long section of the LED strip to the power supply:



Connecting the LED strip to a power supply:




Connecting a long section of the LED strip to the power supply:




Proposed power supply:

IP20



- MEAN WELL **RS-50** (50W, IP20, DC 12V 4,2A)
- MEAN WELL **RS-75** (72W, IP20, DC 12V 6A)
- MEAN WELL **RS-150** (150W, IP20, DC 12V 12,5A)

IP67



- MEAN WELL **LPH-18** (18W, IP67, DC 12V 1.5A)
- MEAN WELL **LPV-35** (36W, IP67, DC 12V 3A)
- MEAN WELL **LPV-60** (60W, IP67, DC 12V 5A)
- MEAN WELL **LPV-100** (100W, IP67, DC 12V 8,5A)

