

# LED STRIP LIGHT SMD 5050 - 300 LED

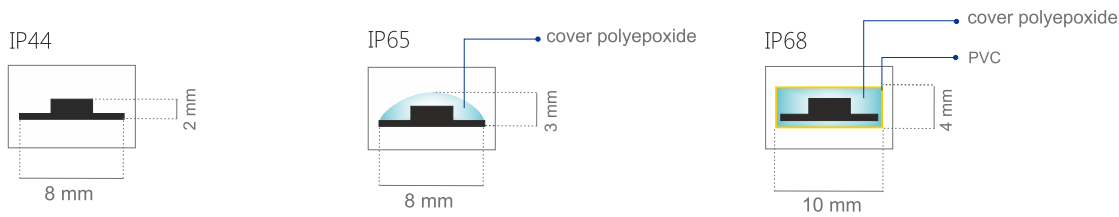


## FEATURES:

- Super bright SMD 5050 LEDs
- Painted FPC underlay
- Long lifetime of over 100,000 hrs
- Fast and easy installation with 3M adhesive tape
- No UV emission
- Wide viewing angle
- Low energy consumption
- High flexibility
- Can be cut every 50 mm
- Made in the EU

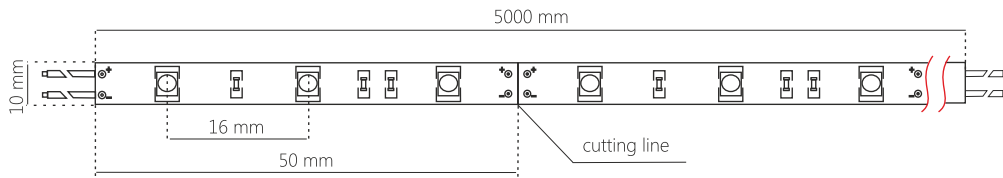


## Technical specifications:

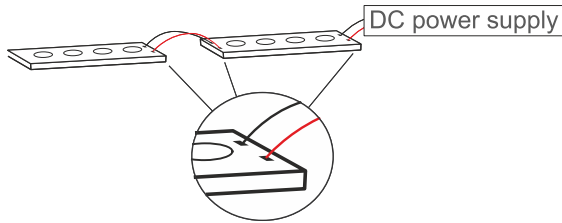


TS 5050 - 300 colour	Colour (K)	LED Qty. / 5 m	LED Qty. / 1 m	IP Rating	Voltage	Cutting Unit	Power	lm. max
● warm white	2700 - 3500 K	300 pcs	60 pcs	IP44, IP65, IP68	12V DC	3 LED (50 mm)	14,4W/m	3600
○ daylight white	3800 - 4500 K	300 pcs	60 pcs	IP44, IP65, IP68	12V DC	3 LED (50 mm)	14,4W/m	3600
○ cold white	6000 - 7500 K	300 pcs	60 pcs	IP44, IP65, IP68	12V DC	3 LED (50 mm)	14,4W/m	3600
● red	620 - 630 nm	300 pcs	60 pcs	IP44, IP65, IP68	12V DC	3 LED (50 mm)	14,4W/m	1034
● yellow	588 - 593 nm	300 pcs	60 pcs	IP44, IP65, IP68	12V DC	3 LED (50 mm)	14,4W/m	1034
● blue	460 - 470 nm	300 pcs	60 pcs	IP44, IP65, IP68	12V DC	3 LED (50 mm)	14,4W/m	1130
● green	510 - 530 nm	300 pcs	60 pcs	IP44, IP65, IP68	12V DC	3 LED (50 mm)	14,4W/m	2354

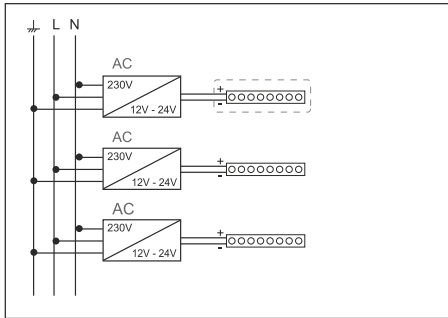
Schematics:



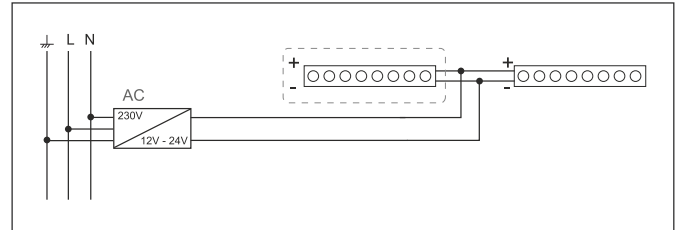
Connection of LED strip to power supply:



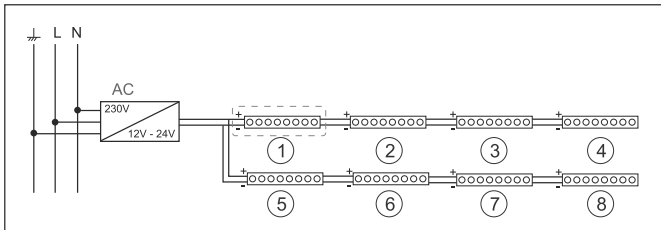
Connecting the LED strip to a number of power supplies:



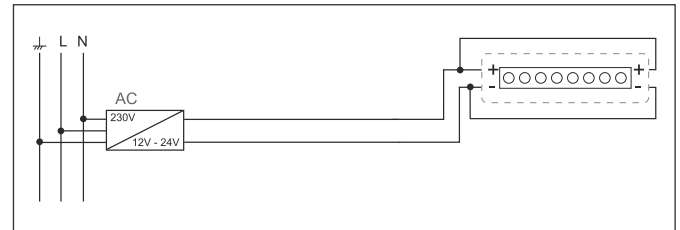
Connecting a long section of the LED strip to the power supply:



Connecting the LED strip to a power supply:




Connecting a long section of the LED strip to the power supply:




Proposed power supply:

**IP20**



- MEAN WELL **RS-50** (50W, IP20, DC 12V 4,2A)
- MEAN WELL **RS-75** (72W, IP20, DC 12V 6A)
- MEAN WELL **RS-150** (150W, IP20, DC 12V 12,5A)

**IP67**



- MEAN WELL **LPH-18** (18W, IP67, DC 12V 1.5A)
- MEAN WELL **LPV-35** (36W, IP67, DC 12V 3A)
- MEAN WELL **LPV-60** (60W, IP67, DC 12V 5A)
- MEAN WELL **LPV-100** (100W, IP67, DC 12V 8,5A)

